

Celtic Raven

More FREE patterns available at
KarenCrefor.com

Features:

- Challenge level: whole stitches and fractionals
- Just 2 colours!
- Suggested fabric: 32hpi dark grey evenweave
- Recommended number of strands:
cross-stitch: 2
- Finished size: 128x84 stitches
14hpi: 9.14x6" 22.85x15cm
16hpi: 8x5.25" 20x13.13cm
18hpi: 7.11x4.67" 17.78x11.68cm



- There is a 3 square 'overlap' on the chart represented by shaded grey squares. This is a repeated area from the previous page to help keep your place when moving from one page to another and not to be stitched again.
- A key on the last page including number of 8m skeins needed for each colour. There is also a mini key at the bottom of every page for quick reference.

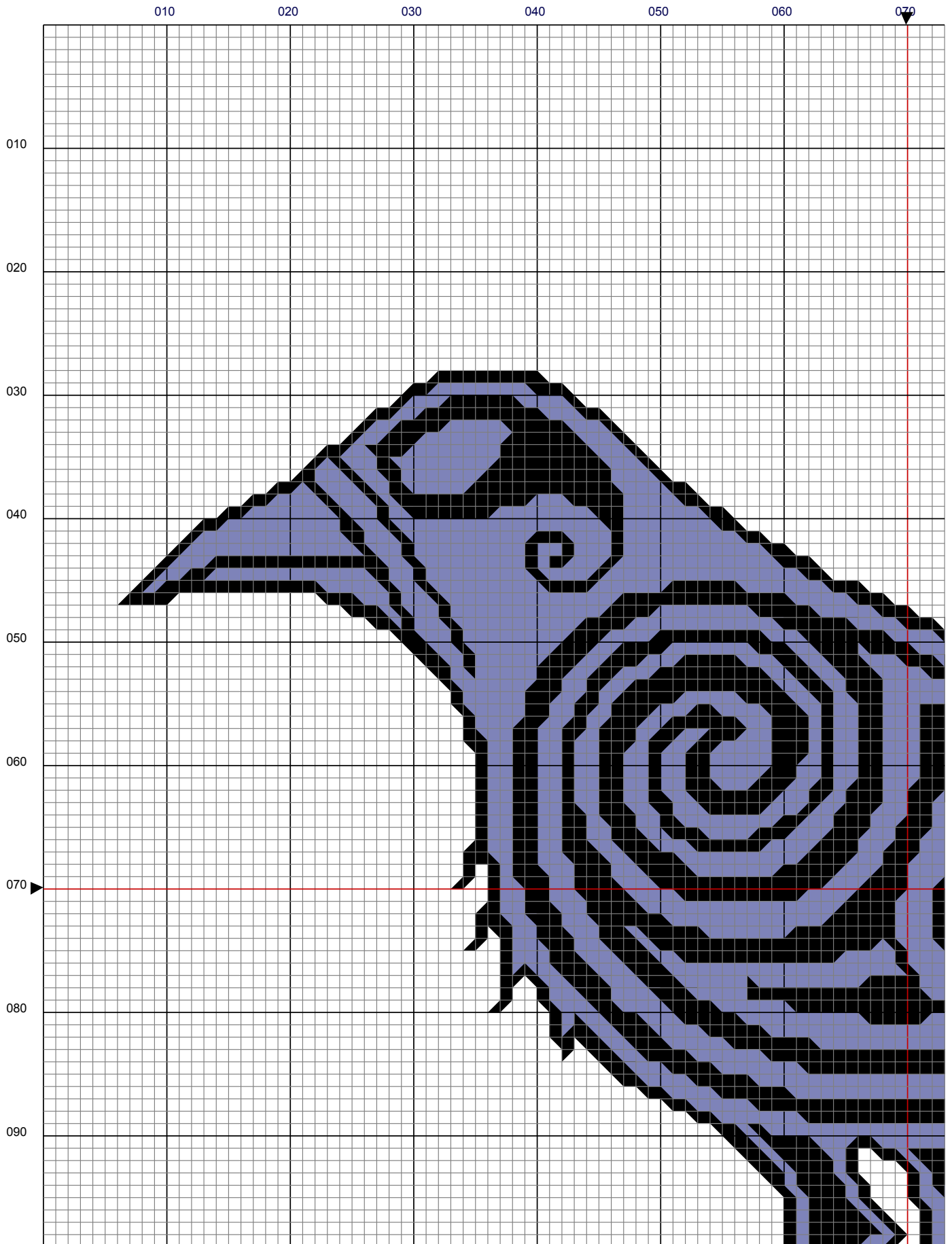
PLEASE READ BEFORE STARTING!

- Cut your fabric AT LEAST 6" / 15cm larger than the finished size.
- Finished size is for the stitched area ONLY.
- Start from the centre by folding your fabric in half each way - this ensures perfect placement!

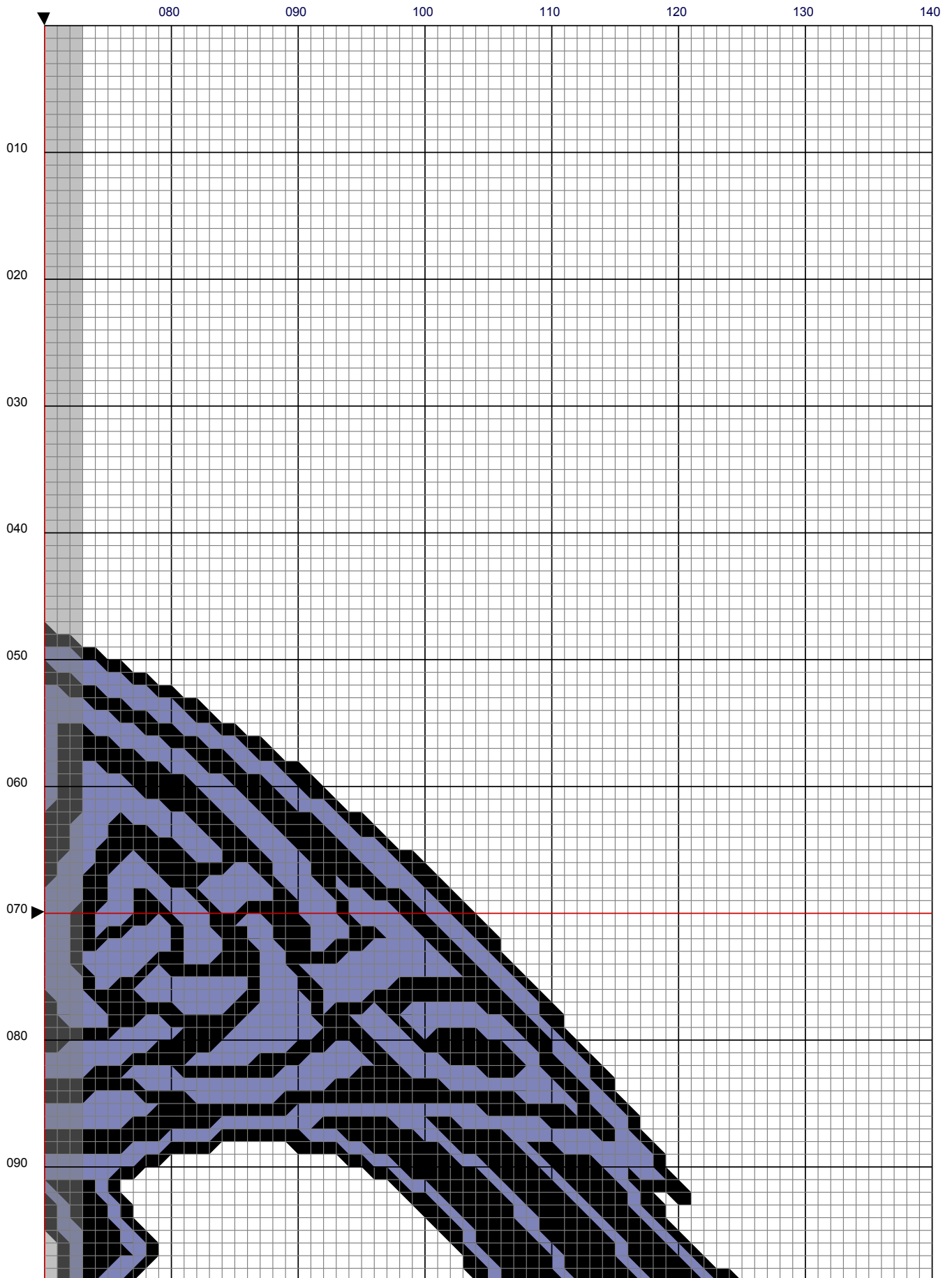
Instructions for how to stitch can be found at: <https://youtu.be/5ikWwfqMG-I>

Copyright 2021 Karen Crefor. No content may be reproduced, altered or redistributed, for personal or commercial use, without written permission of the designer

Celtic Raven



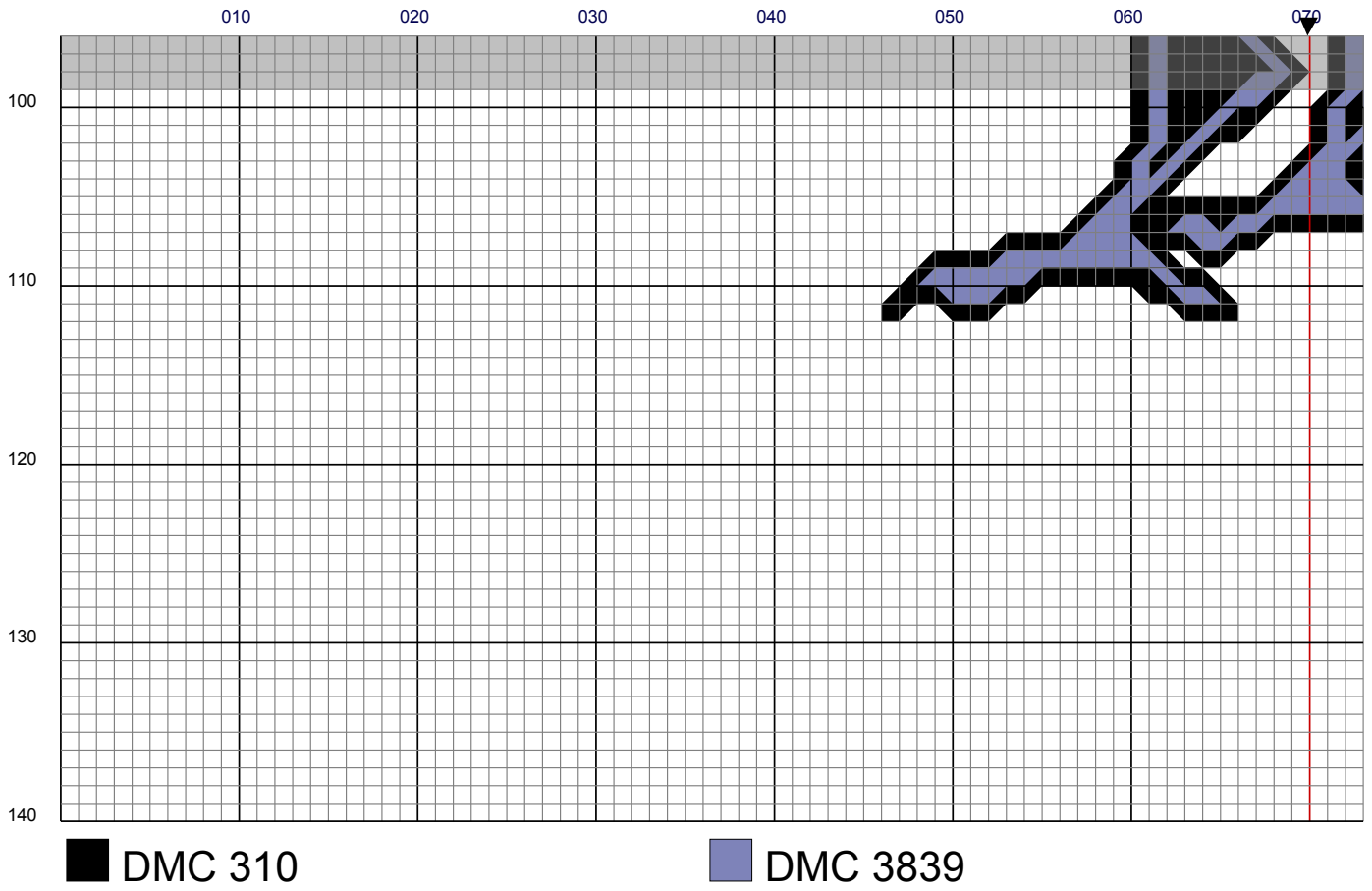
Celtic Raven



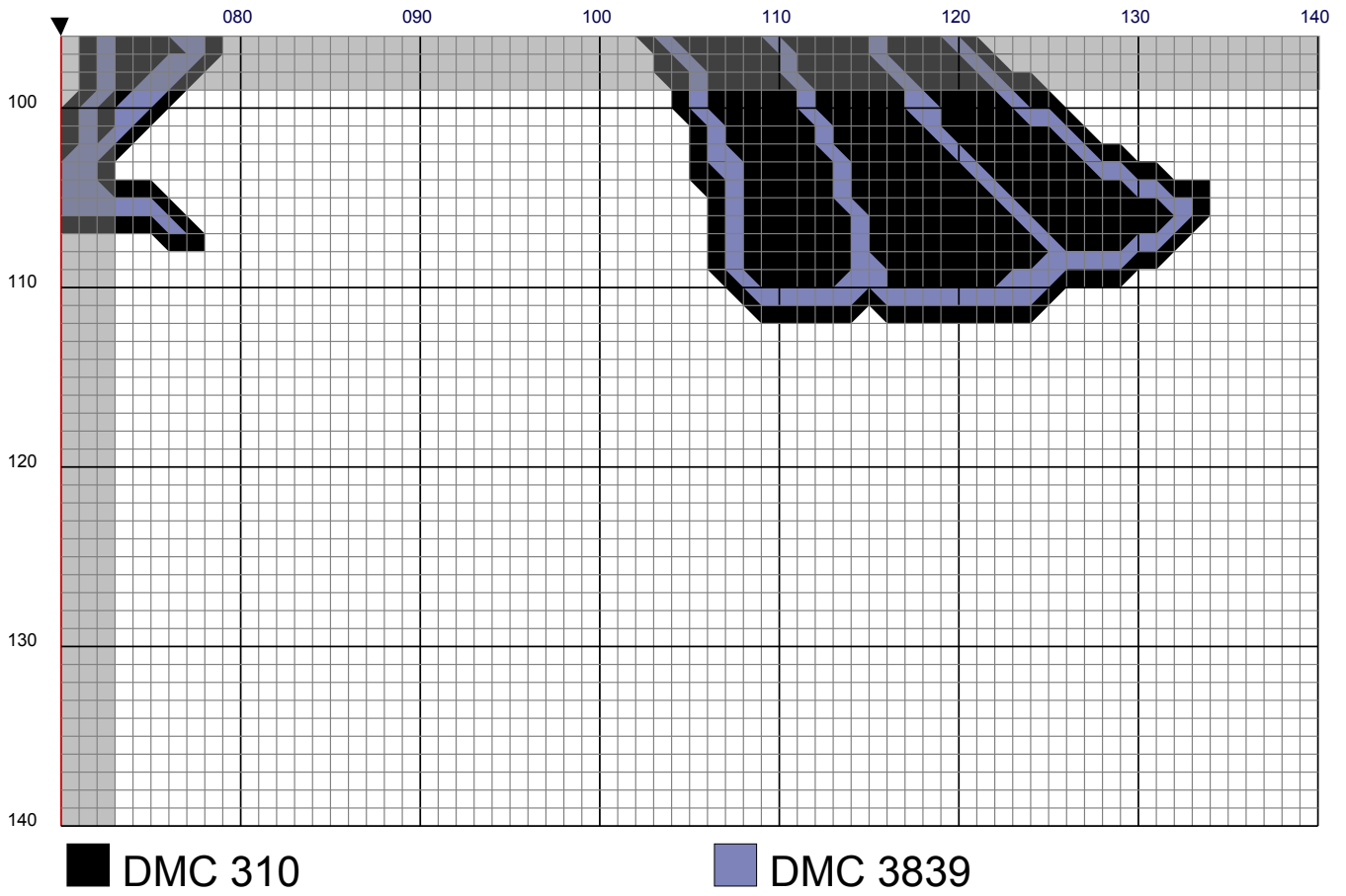
■ DMC 310

■ DMC 3839

Celtic Raven



Celtic Raven



Celtic Raven

8.0 x 5.3 in. @ 16.0 stitch/in

	Number	Name:	Strands	Length
	DMC 310	Black	2	1.8 skeins
	DMC 3839	Lavender Blue MD	2	1.6 skeins

Celtic Raven

	010	020	030	040	050	060	070
010							
020							
030							
040							
050							
060							
070							
080							
090							

2 DMC 310

1 DMC 3839

Celtic Raven

080

090

100

110

120

130

140

010

020

030

040

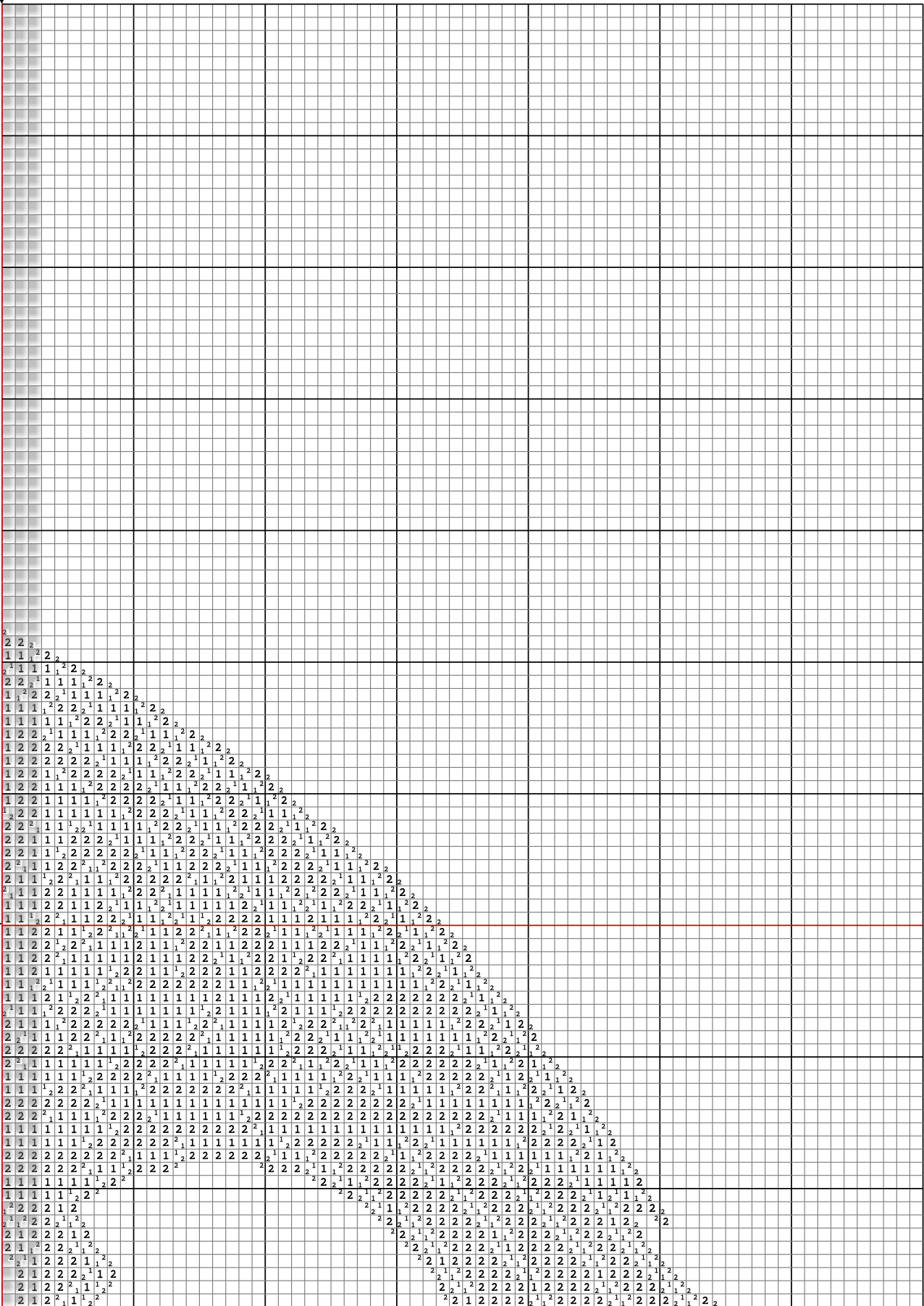
050

060

070

080

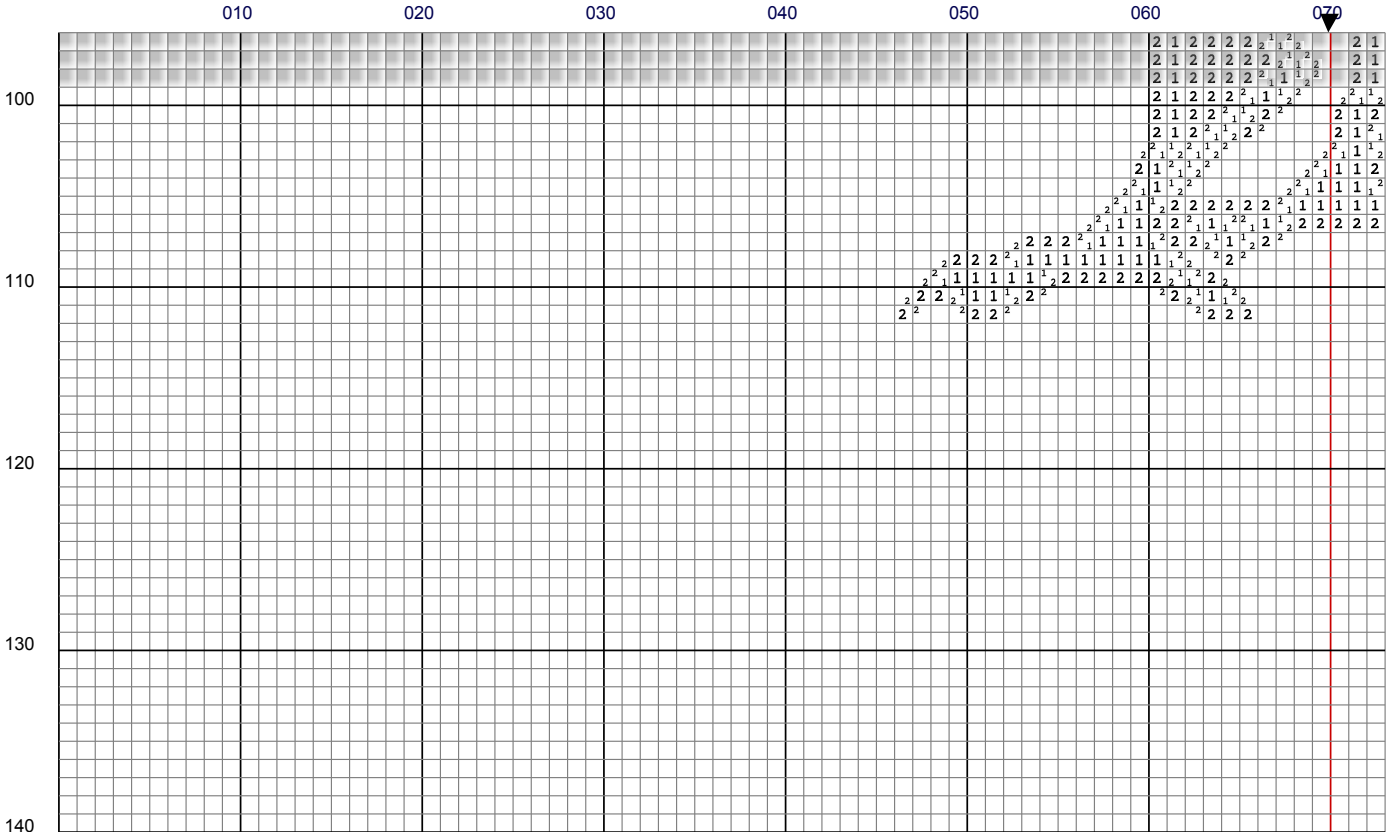
090



2 DMC 310

1 DMC 3839

Celtic Raven



2 DMC 310

1 DMC 3839

Celtic Raven

8.0 x 5.3 in. @ 16.0 stitch/in

	Number	Name:	Strands	Length
2	DMC 310	Black	2	1.8 skeins
1	DMC 3839	Lavender Blue MD	2	1.6 skeins